



**LIST OF REFERENCES  
INTAKE PIPELINES & SEA OUTFALLS  
WORLDWIDE**



## PPA&KRAH PIPELINES WORLDWIDE MAIN REFERENCES

No.	INTERNAL DIAMETER (mm)	LENGTH (m)	MATERIAL/STANDARD	PROJECT	CONTRACTOR	CLIENT	YEAR	LOCATION	USE
1	2.000	400	HDPE pipes/DIN16961	Regasification Plant.	Tractebel	Reganosa	2.005	La Coruña - Spain	Discharge of cooling water
2	1.000	36	HDPE pipes/DIN16961	EDAR Guillarei	Ferrovial / Cadagua	Conf. Hidrográfica del Norte	2.005	Pontevedra - Spain	Discharge of water Treatment plant
3	1.200	260	HDPE pipes/DIN16961	Punta Grande Outfall	Dragados	UNELCO-ENDESA	2.006	Tenerife - Spain	Discharge of Combined Cycle
4	1.800	1.100	HDPE pipes/DIN16961	CC Sagunto Outfall	Drace	Unión Fenosa	2.006	Valencia -. Spain	Discharge of Combined Cycle
5	1.800	1.000	HDPE pipes/DIN16961	Valdelentisco Desalination Plant	Ferrovial / Cadagua	Aguas de la Cuenca del Segura (ACUAMED)	2.006	Murcia - Spain	Seawater intake Desalination plant
6	1.500	1.300							Seawater discharge Desalination plant
7	1.800	1.200	HDPE pipes/DIN16961	Skikda Desalination Plant (Algeria)	Cobra / Befesa / Codesa / Sadyt	Aguas de Skikda	2.006	Algeria	Seawater intake Desalination plant
8	1.500	750							Brine discharge Desalination plant
9	1.800	750	HDPE pipes/DIN16961	Storm water system - Cádiz	Martín Casillas / Bardera	EGMASA	2.007	Cádiz - Spain	Storm Water outfall
10	1.400	220							Storm Water outfall
11	800	330							Storm Water outfall
12	2.400	1.200	HDPE pipes/DIN16961	Béni-Saf Desalination Plant (Algeria)	Cobra	Béni Saf Water Company	2.007	Algeria	Seawater intake Desalination plant
13	1.800	1.600	HDPE pipes/DIN16961						Seawater discharge Desalination plant
14	2.400	1.000	HDPE pipes/DIN16961	Honaine Desalination Plant (Algeria)	Befesa / Sadyt	MYAH BAHR HONAIN SPA	2.008	Algeria	Seawater intake Desalination plant
15	1.500	900	HDPE pipes/DIN16961					Algeria	Seawater discharge Desalination plant
16	2.400	700	HDPE pipes/DIN16961	CCC ENEL - Algeciras	FPS / Dragados	ENEL	2.009	Cádiz - Spain	Seawater intake of Combined Cycle
17	2.400	750	HDPE pipes/DIN16961					Cádiz - Spain	Seawater discharge of Combined Cycle
18	1.800	5.000	HDPE pipes/DIN16961	Mostaganem Desalination Plant (Algeria)	Aqualia / Inima	STMM	2.009	Algeria	Seawater intake Desalination plant
19	1.800	1.500	HDPE pipes/DIN16961						Seawater discharge Desalination plant
20	1.500	150	HDPE pipes/DIN16961	ROTA Outfall	Sercon Portuense	Ayuntamiento de Rota	2.009	Cádiz - Spain	Rain Water Outfall
21	2.200	500	HDPE pipes/DIN16961	Águilas Desalination Plant	Ferrovial / Sacyr	ACUAMED	2.010	Murcia - Spain	Seawater intake Desalination plant
22	2.400	460	HDPE pipes/DIN16961	Cooling – Fertilizer Company	PPA	FERTIBERIA (FERTIAL)	2.010	Algeria	Cooling water intake
23	2.000	300	HDPE pipes/DIN16961	CCC – Montoir-de-Bretagne	Técnicas Reunidas	GDF	2.011	France	Combined Cycle Discharge
24	1.800	2.100	HDPE pipes/DIN16961	Cap D'Jinet Desalination Plant (Algeria)	Aqualia / Inima	SMD	2.011	Algeria	Seawater Intake Desalination Plant
25	1.200	1.250							Brine discharge Desalination Plant
26	2.400	2.050	HDPE pipes/DIN16961	CCC - Koudiet	Iberdrola	SKD	2.012	Algeria	Seawater intake Combined Cycle Cooling
27	1.200	421	HDPE pipes/DIN16961	Mutxamel Desalination Plant	Degremont / Acsa / Rover Alcisa	Aguas de las Cuencas Mediterráneas, ACUAMED	2.012	Alicante	Brine discharge Desalination Plant
28	1.800	615							Seawater Intake Desalination Plant
29	3.000	3.904	HDPE pipes/DIN16961	PTAR Taboada	Tedagua / Cobra	Ministry of Housing, Construction and Sanitation	2.013	Lima - Perú	Discharge Waste water Treatment Plant
30	1.400	1.200	HDPE pipes/DIN16961	Independent water and power project in Salalah	Al Sarooj construction company LLC	OPWP	2.013	OMAN	Seawater Intake
31	1.400	1.900	HDPE pipes/DIN16961	A, Seeb Waste Water Project	Hyundai Rotem	HAYA Water	2.014	Oman	Discharge Waste water Treatment Plant
32	2.400	3.650	HDPE pipes/DIN16961	PTAR La CHIRA	Acciona Agua / Graña y Montero	Ministerio de vivienda Construcción y Saneamiento	2.015	Lima. Perú	Discharge Waste water Treatment Plant
33	1.900 / 1.700	4.500	HDPE pipes / ISO4427	Al Ghubrah independent water project	International Water Treatment LLC	MUSCAT CITY DESALINATION COMPANY	2.015	OMAN	Seawater Intake & Brine discharge Desalination Plant
34	OD315 to ID2000	11.713	HDPE pipes / ISO4427 and DIN 16961	Proyecto de Modernización de la Refinería de Talara	UTE TR TALARA	PETROPERU	2.015	Talara, Perú	Refinery Oiled Water System and Rainwater System
35	3.000	15.500	HDPE pipes/DIN16961	Jazan Seawater System	CHEC	ARAMCO	2.016	Saudi Arabia	6 lines x Sea Outfall
36	1.400	3.050	HDPE pipes / ISO4427	BARKA IV Desalination Plant	SUEZ	OPWP	2.016	Oman	Seawater discharge Desalination plant
37	2.000	1.500						Oman	Seawater intake Desalination plant



## PPA&KRAH PIPELINES WORLDWIDE MAIN REFERENCES

No.	INTERNAL DIAMETER (mm)	LENGTH (m)	MATERIAL/STANDARD	PROJECT	CONTRACTOR	CLIENT	YEAR	LOCATION	USE
38	1.600	8.000	HDPE pipes/DIN16961	JECPI Desalination Plant	CHEC	ARAMCO	2.017	Saudi Arabia	Seawater discharge Desalination plant
39	1.800	6.804						Saudi Arabia	Seawater intake Desalination plant
40	800	1.767	HDPE pipes / ISO4427	Salalah IWP Desalination Plant	FISIA-Abengoa	Dhofar Dealination Company	2.018	Oman	Seawater discharge Desalination plant
41	1.400	1.123						Oman	Seawater intake Desalination plant
42	1.000	1.090	HDPE pipes/DIN16961	KAEC SWRO Plant	Metito Overseas Ltd.	Metito Overseas Ltd.	2.018	Saudi Arabia	Seawater discharge Desalination plant
43	1.000	2.010						Saudi Arabia	Seawater intake Desalination plant
44	1.800 /2.400	76	HDPE pipes/DIN16961	Proyecto de Modernización de la Refinería de Talara	Terratest Perú	PETROPERU	2.018	Talara, Perú	Seawater Outfall
45	2.000	2.788	HDPE pipes / ISO4427	JEBEL ALI SWRO PLANT	Acciona Agua/BESIX	DEWA	2019	UAE (Dubai)	Seawater intake Desalination plant
46	2.200	7.383	HDPE pipes/DIN16961	SHUQAIQ 3 SWRO Plant	Acciona Agua	SHUQAIQ SWRO	2020	Saudi Arabia	Seawater intake Desalination plant
47	1.800	368	HDPE pipes/DIN16961	ROTA CITY STORM WATER SYSTEM	C. Garrucho, S.A.	AREMSA	2021	Spain	Strom Water System

## SEA INTAKE & OUTFALLS REFERENCES

No.	INTERNAL DIAMETER	LENGTH (m)	MATERIAL	PROJECT
1	2.000	400	HDPE pipes acc. DIN16961	Regasification Plant.

CONTRACTOR	CLIENT	YEAR	LOCATION	USE
Tractebel	Reganosa	2005	La Coruña - Spain	Discharge of cooling water



No.	INTERNAL DIAMETER	LENGTH (m)	MATERIAL	PROJECT
2	1.000	36	HDPE pipes acc. DIN16961	EDAR Guillarei.

CONTRACTOR	CLIENT	YEAR	LOCATION	USE
Ferrovial / Cadagua	Confederación Hidrográfica del Norte	2005	Pontevedra - Spain	Discharge of water Treatment plant



## SEA INTAKE & OUTFALLS REFERENCES

No.	INTERNAL DIAMETER	LENGTH (m)	MATERIAL	PROJECT
3	1.200	260	HDPE pipes acc. DIN16961	Punta Grande Outfall

CONTRACTOR	CLIENT	YEAR	LOCATION	USE
Dragados	UNELCO-ENDESA	2006	Tenerife - Spain	Discharge of Combined Cycle



No.	INTERNAL DIAMETER	LENGTH (m)	MATERIAL	PROJECT
4	1.800	1.100	HDPE pipes acc. DIN16961	CC Sagunto Outfall

CONTRACTOR	CLIENT	YEAR	LOCATION	USE
Drace	Unión Fenosa	2006	Valencia -. Spain	Discharge of Combined Cycle



## SEA INTAKE & OUTFALLS REFERENCES

No.	INTERNAL DIAMETER	LENGTH (m)	MATERIAL	PROJECT	CONTRACTOR	CLIENT	YEAR	LOCATION	USE
5	1.800	1.000	HDPE pipes acc. DIN16961	Valdelentisco Desalination Plant	Ferrovia / Cadagua	Aguas de la Cuenca del Segura (ACUAMED)	2006	Murcia - Spain	Seawater intake Desalination plant
6	1.500	1.300							Seawater discharge Desalination plant







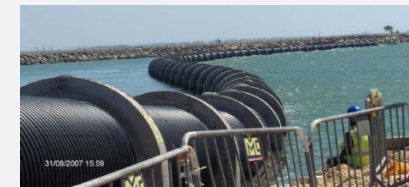
## SEA INTAKE & OUTFALLS REFERENCES

No.	INTERNAL DIAMETER	LENGTH (m)	MATERIAL	PROJECT	CONTRACTOR	CLIENT	YEAR	LOCATION	USE
7	1.800	1.200	HDPE pipes acc. DIN16961	Skikda Desalination Plant (Algeria)	Cobra / Befesa / Codesa / Sadyt	Aguas de Skikda	2006	Algeria	Seawater intake Desalination plant
8	1.500	750							Brine discharge Desalination plant



## SEA INTAKE & OUTFALLS REFERENCES

No.	INTERNAL DIAMETER	LENGTH (m)	MATERIAL	PROJECT	CONTRACTOR	CLIENT	YEAR	LOCATION	USE
9	1.800	750	HDPE pipes acc. DIN16961	Storm water system - Cádiz	Martín Casillas / Bardera	EGMASA	2007	Cádiz - Spain	Storm Water outfall
10	1.400	220	HDPE pipes acc. DIN16961						Storm Water outfall
11	800	330	HDPE pipes acc. DIN16961						Storm Water outfall





## SEA INTAKE & OUTFALLS REFERENCES

No.	INTERNAL DIAMETER	LENGTH (m)	MATERIAL	PROJECT	CONTRACTOR	CLIENT	YEAR	LOCATION	USE
12	2.400	1.200	HDPE pipes acc. DIN16961	Béni-Saf Desalination Plant (Algeria)	Cobra	Béni Saf Water Company	2007	Algeria	Seawater intake Desalination plant
13	1.800	1.600	HDPE pipes acc. DIN16961				2007		Seawater discharge Desalination plant



## SEA INTAKE & OUTFALLS REFERENCES

No.	INTERNAL DIAMETER	LENGTH (m)	MATERIAL	PROJECT	CONTRACTOR	CLIENT	YEAR	LOCATION	USE
14	2.400	1000	HDPE pipes acc. DIN16961	Honaine Desalination Plant (Algeria)	Befesa / Sadyt	MYAH BAHR HONAINE SPA	2008	Algeria	Seawater intake Desalination plant
15	1.500	900	HDPE pipes acc. DIN16961				2008	Algeria	Seawater discharge Desalination plant



## SEA INTAKE & OUTFALLS REFERENCES

No.	INTERNAL DIAMETER	LENGTH (m)	MATERIAL	PROJECT	CONTRACTOR	CLIENT	YEAR	LOCATION	USE
16	.400	700	HDPE pipes acc. DIN16961	CCC ENEL - Algeciras	FPS / Dragados	ENEL	2009	Cádiz - Spain	Seawater intake of Combined Cycle
17	2.400	750	HDPE pipes acc. DIN16961				2009	Cádiz - Spain	Seawater discharge of Combined Cycle



## SEA INTAKE & OUTFALLS REFERENCES

No.	INTERNAL DIAMETER	LENGTH (m)	MATERIAL	PROJECT	CONTRACTOR	CLIENT	YEAR	LOCATION	USE
18	1.800	5000	HDPE pipes acc. DIN16961	Mostaganem Desalination Plant (Algeria)	Aqualia / Inima	STMM	2009	Algeria	Seawater intake Desalination plant
19	1.800	1500	HDPE pipes acc. DIN16961				2009		Seawater discharge Desalination plant





## SEA INTAKE & OUTFALLS REFERENCES

No.	INTERNAL DIAMETER	LENGTH (m)	MATERIAL	PROJECT	CONTRACTOR	CLIENT	YEAR	LOCATION	USE
20	1.500	150	HDPE pipes acc. DIN16961	ROTA Outfall	Sercon Portuense	Ayuntamiento de Rota	2009	Cádiz - Spain	Rain Water Outfall

No.	INTERNAL DIAMETER	LENGTH (m)	MATERIAL	PROJECT	CONTRACTOR	CLIENT	YEAR	LOCATION	USE
21	2.200	500	HDPE pipes acc. DIN16961	Águilas Desalination Plant	Ferrovial / Sacyr	ACUAMED	2010	Murcia - Spain	Seawater intake Desalination plant



## SEA INTAKE & OUTFALLS REFERENCES

No.	INTERNAL DIAMETER	LENGTH (m)	MATERIAL	PROJECT
22	2.400	460	HDPE pipes acc. DIN16961	Cooling – Fertilizer Company
CONTRACTOR	CLIENT	YEAR	LOCATION	USE
PPA	FERTIBERIA (FERTIAL)	2010	Algeria	Cooling water intake



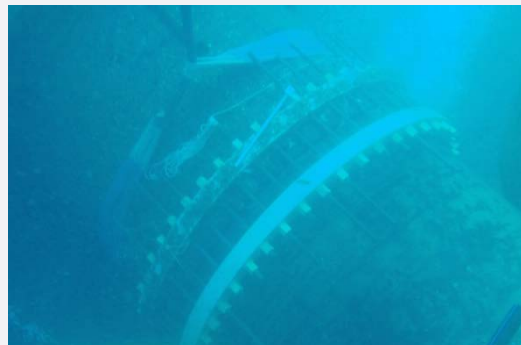
No.	INTERNAL DIAMETER	LENGTH (m)	MATERIAL	PROJECT	CONTRACTOR
23	2.000	300	HDPE pipes acc. DIN16961	CCC – Montoir-de-Bretagne	Técnicas Reunidas
CLIENT	YEAR	LOCATION	USE		
GDF	2011	France	Discharge Combined Cycle		





## SEA INTAKE & OUTFALLS REFERENCES

No.	INTERNAL DIAMETER	LENGTH (m)	MATERIAL	PROJECT	CONTRACTOR	CLIENT	YEAR	LOCATION	USE
24	1.800	2.100	HDPE pipes acc. DIN16961	Cap D'Jinet Desalination Plant (Algeria)	Aqualia / Inima	SMD	2011	Algeria	Seawater intake Desalination plant
25	1.200	1.250	HDPE pipes acc. DIN16961				2011		Brine discharge Desalination plant



## SEA INTAKE & OUTFALLS REFERENCES

No.	INTERNAL DIAMETER	LENGTH (m)	MATERIAL	PROJECT	CONTRACTOR	CLIENT	YEAR	LOCATION	USE
26	2.400	2.050	HDPE pipes acc. DIN16961	CCC - Koudiet	Iberdrola	SKD	2012	Algeria	Seawater intake Combined Cycle Cooling



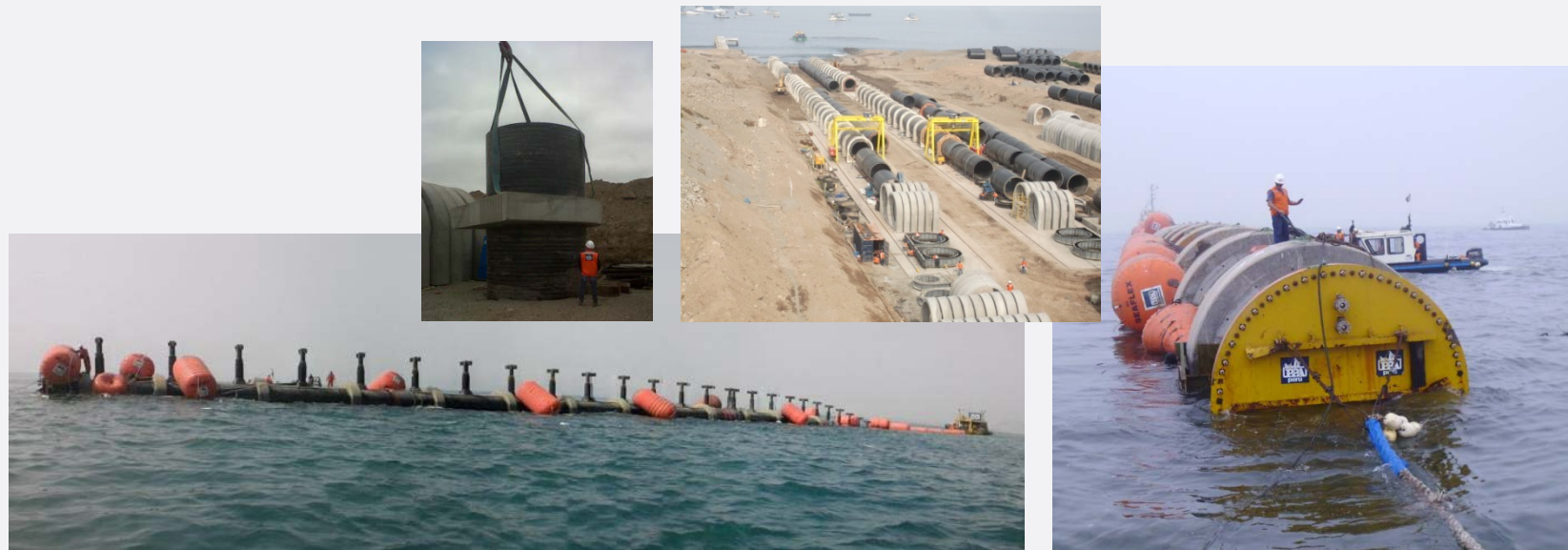
## SEA INTAKE & OUTFALLS REFERENCES

No.	INTERNAL DIAMETER	LENGTH (m)	MATERIAL	PROJECT	CONTRACTOR	CLIENT	YEAR	LOCATION	USE
27	1.200	421	HDPE pipes acc. DIN16961	Mutxamel Desalination Plant	Degremont / Acsa /Rover Alcisa	Aguas de las Cuencas Mediterráneas , ACUAMED	2012	Alicante	Brine discharge Desalination plant
28	1.800	615	HDPE pipes acc. DIN16961						Intake Desalination plant



## SEA INTAKE & OUTFALLS REFERENCES

No.	INTERNAL DIAMETER	LENGTH (m)	MATERIAL	PROJECT	CONTRACTOR	CLIENT	YEAR	LOCATION	USE
29	3.000	3904	HDPE pipes acc. DIN16961	PTAR Taboada	Tedagua / Cobra	Ministry of Housing, Construction and Sanitation	2013	Lima - Perú	Discharge Waste water Treatment Plant





## SEA INTAKE & OUTFALLS REFERENCES

No.	INTERNAL DIAMETER	LENGTH (m)	MATERIAL	PROJECT	CONTRACTOR	CLIENT	YEAR	LOCATION	USE
30	1.400	1.200	HDPE pipes acc. DIN16961	Independent water and power project in Salah	Al Sarooj construction company LLC	OPWP	2013	OMAN	Seawater Intake



## SEA INTAKE & OUTFALLS REFERENCES

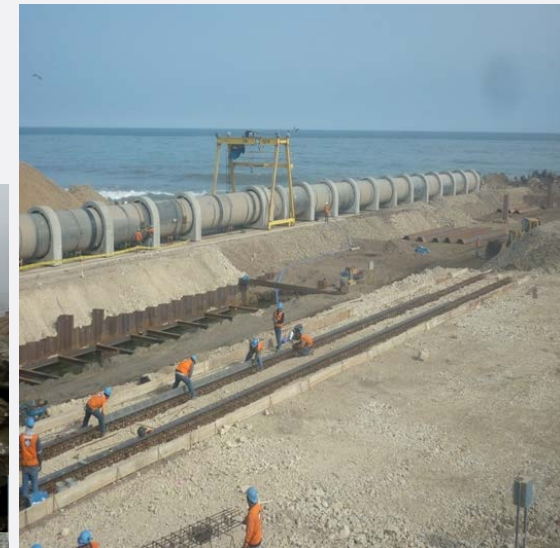
No.	INTERNAL DIAMETER	LENGTH (m)	MATERIAL	PROJECT	CONTRACTOR	CLIENT	YEAR	LOCATION	USE
31	1.400	1.900	HDPE pipes acc. DIN16961	A, Seeb Waste Water Project	Hyundai Rotem	HAYA Water	2014	Oman	Discharge Waste water Treatment Plant





## SEA INTAKE & OUTFALLS REFERENCES

No.	INTERNAL DIAMETER	LENGTH (m)	MATERIAL	PROJECT	CONTRACTOR	CLIENT	YEAR	LOCATION	USE
32	2.400	3.650	HDPE pipes acc. DIN16961	PTAR La CHIRA	Acciona Agua / Graña y Montero	Ministerio de vivienda Construcción y Saneamiento	2015	Lima. Perú	Discharge Waste water Treatment Plant



## SEA INTAKE & OUTFALLS REFERENCES

No.	INTERNAL DIAMETER	LENGTH (m)	MATERIAL	PROJECT	CONTRACTOR	CLIENT	YEAR	LOCATION	USE
33	1.900 / 1.700	4.500	HDPE pipes acc. ISO4427	Al Ghubrah independent water project	International Water Treatment LLC	MUSCAT CITY DESALINATION COMPANY	2015	OMAN	Seawater Intake & Brine discharge Desalination plant



## SEA INTAKE & OUTFALLS REFERENCES

No.	INTERNAL DIAMETER	LENGTH (m)	MATERIAL	PROJECT	CONTRACTOR	CLIENT	YEAR	LOCATION	USE
34	OD315 to ID2.000	11.713	ISO04427 & DIN16961	TALARA REFINERY	TECNICAS REUNIDAS	PETROPERU	2016	PERU	Oily water sewer system





## SEA INTAKE & OUTFALLS REFERENCES

No.	INTERNAL DIAMETER	LENGTH (m)	MATERIAL	PROJECT	CONTRACTOR	CLIENT	YEAR	LOCATION	USE
35	3.000	15.500	HDPE pipes acc. DIN16961	Jazan Seawater System	CHEC	ARAMCO	2016	Saudi Arabia	6 lines x Sea Outfall



## SEA INTAKE & OUTFALLS REFERENCES

No.	INTERNAL DIAMETER	LENGTH (m)	MATERIAL	PROJECT	CONTRACTOR	CLIENT	YEAR	LOCATION	USE
36	1.400	3.050	HDPE pipes acc. ISO4427	BARKA IV Desalination Plant	SUEZ	OPWP	2016	OMAN	Brine discharge Desalination plant
37	2.000	1.500	HDPE pipes acc. ISO4427				2016		Intake Desalination plant



## SEA INTAKE & OUTFALLS REFERENCES

No.	INTERNAL DIAMETER	LENGTH (m)	MATERIAL	PROJECT	CONTRACTOR	CLIENT	YEAR	LOCATION	USE
38	1.600	8.000	HDPE pipes acc. DIN16961	JECPI DESALINATION PLANT	CHEC	ARAMCO	2017	SAUDI ARABIA	Brine discharge Desalination plant
39	1.800	6.804	HDPE pipes acc. DIN16961				2017		Intake Desalination plant





## SEA INTAKE & OUTFALLS REFERENCES

No.	INTERNAL DIAMETER	LENGTH (m)	MATERIAL	PROJECT	CONTRACTOR	CLIENT	YEAR	LOCATION	USE
40	800	1.767	HDPE pipes acc. ISO4427	SALALAH IWP DESALINATION PLANT	FISIA – ABENGOA	DHO FAR DESALINATION COMPANY	2018	OMAN	Brine discharge Desalination plant
41	1.400	1.123	HDPE pipes acc. ISO4427				2018		Intake Desalination plant



## SEA INTAKE & OUTFALLS REFERENCES

No.	INTERNAL DIAMETER	LENGTH (m)	MATERIAL	PROJECT	CONTRACTOR	CLIENT	YEAR	LOCATION	USE
42	1.000	1.090	HDPE pipes acc. DIN16961	KAEC DESALINATION PLANT	METITO OVERSEAS LTD.	METITO OVERSEAS LTD	2018	SAUDI ARABIA	Brine discharge Desalination plant
43	1.000	2.010	HDPE pipes acc. DIN16961				2018		Intake Desalination plant



## SEA INTAKE & OUTFALLS REFERENCES

No.	INTERNAL DIAMETER	LENGTH (m)	MATERIAL	PROJECT	CONTRACTOR	CLIENT	YEAR	LOCATION	USE
44	1.800/2.400	76	HDPE pipes acc. DIN16961	REFINERY OF TALARA	TERRATEST PERU	PETROPERU	2018	PERU	Seawater outfall





## SEA INTAKE & OUTFALLS REFERENCES

No.	INTERNAL DIAMETER	LENGTH (m)	MATERIAL	PROJECT	CONTRACTOR	CLIENT	YEAR	LOCATION	USE
45	2.000	2.788	HDPE pipes acc. ISO4427	JABEL ALI SWRO PLANT	ACCIONA - BESIX	DEWA	2019	UAE (DUBAI)	Seawater intake



## SEA INTAKE & OUTFALLS REFERENCES

No.	INTERNAL DIAMETER	LENGTH (m)	MATERIAL	PROJECT	CONTRACTOR	CLIENT	YEAR	LOCATION	USE
46	2.200	7.383	HDPE pipes acc. DIN16961	SHUQAIQ 3 SWRO PLANT	ACCIONA	SWCC	2020	SAUDI ARABIA	Seawater intake



## SEA INTAKE & OUTFALLS REFERENCES

No.	INTERNAL DIAMETER	LENGTH (m)	MATERIAL	PROJECT	CONTRACTOR	CLIENT	YEAR	LOCATION	USE
47	1.800	368	HDPE pipes acc. DIN16961	ROTA CITY STORM WATER SYSTEM	C. GARRUCHO, S.A.	AREMSA	2021	SPAIN	Storm Water System

